

SOCIO-ECONOMIC RISK FACTORS OF CRIMINAL BEHAVIOR IN TEENAGER ENVIRONMENT: A REGIONAL ASPECT

**Ekaterina V Ilgova, Saratov State Academy of Law
Tamara A Smagina, Saratov State Academy of Law
Galina I Vershinina, Saratov State Academy of Law
Irina O Kuznetcova, Saratov State Academy of Law
Mikhail V Gorbachev, Saratov State Academy of Law**

ABSTRACT

The present article aims to review and determine the risk factors for forming and developing of criminal behaviors in teenager environment. The definitions and analysis of these risk factors require an interdisciplinary approach that combines methodological principles of various sciences and research areas: Economics, sociology, jurisprudence, social psychology, regional studies, economic sociology, economic geography, statistics, etc. Authors of the article put forward a hypothesis about the presence of social-economic factors that determine certain types of criminal behavior in a teenager environment. To confirm this hypothesis, extensive statistical material that contains information on social-economic development of the subjects of the Russian Federation, is used. In particular, ratings of regions on the quality of life, the level of unemployment, the level of drug addiction of the population and the number of suicides committed by minors. Other data are also used if necessary for full implementation of the research objective put forward. Based on the collected and the systematized empirical material, conclusions and generalizations are formulated, which, on the one hand, partially prove the hypothesis advanced, on the other hand, requires certain corrections to be made within. Authors of the article believe that tendencies of increase/decrease of crime in the teenager environment revealed by them are partially determined by certain factors of social and economic development of Russian regions.

Keywords: Criminal Behavior, Teenager Environment, Social-Economic Factor, Russian Regions.

INTRODUCTION

Despite the fact that in general over Russia in recent years there has been a decrease in percentage of juvenile delinquency; the problem continues to be relevant. At the expanded collegium meeting of the Ministry of Internal Affairs of Russia held in March 2017, the Minister of Internal Affairs VA. Kolokol'tsev reported: That "the most careful attention of bodies of internal affairs is paid to prevention of crimes committed both by minors and against them. Last year, over one hundred and forty thousand adolescents who were registered for various offenses, were within eyesight of police officers. The result of our work to improve the situation in this area was reduction of criminal offenses committed by minors by thirteen per cent" (Kolokol'tsev, 2016). At the same time, despite success achieved in this direction, the situation in certain

regions cannot be called stable since there are deviations from permissible norm, which is probably due to insufficient preventive work and poor effectiveness of the efforts of authorities and police aimed at preventing crimes. In this regard, the objective of the research work was to identify social-economic factors that determine increase/decrease in crime in the teenager environment. In accordance with the objective, a hypothesis has been formed that regions with low social and economic development rates will demonstrate an increase in crime rates in the teenager environment. In territorial subjects of the Russian Federation in which high rates of social-economic development are recorded, the crime rate in the juvenile environment will be lower.

MATERIALS AND METHODS

To solve the objective, extensive statistical material that contains information on social-economic development of territorial subjects of the Russian Federation, is used. These are empirical rates of the number of crimes committed by minors, the level of juvenile delinquency, the level of general criminality, the quality of life of the population, the level of unemployment, information on the number of families in a socially dangerous situation, the number of minor residents in the subject's territory, etc.

When analysing data, methodological principles of economic sociology were used. According to which, general aspects of the impact of social and economic facts onto quantitative rates of juvenile delinquency were defined. Social manifestations of crime conditioned by the essence of a person, the sense and internal motives of activity in a certain economic situation, were also studied. In addition to general methodological principles of economic sociology, content, intent and discourse analysis were applied. The use of these methods is dictated by the need to study and process a large array of textual information sources with the need for their systematization and generalization. One of main methods used in the paper was a comparative-contrastive method used to interpret quantitative data and statistical rates for regions of the Russian Federation.

Guided by the stated research objective and hypothesis put forward, we will consider the specifics of the criminogenic space of Russia based on information provided on the portal of the Legal Statistics of the Prosecutor General's Office of the Russian Federation (Ceccato & Haining, 2004).

RESULTS AND DISCUSSION

Regions of the Russian Federation can be grouped into five classes in terms of the level of criminal activity of minors (Figure 1 and Table 1).

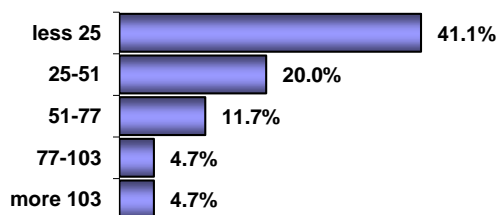


FIGURE 1
DISTRIBUTION OF REGIONS OF THE RUSSIAN FEDERATION ON QUANTITY OF
CRIMES COMMITTED BY TEENAGERS.

Table 1 DISTRIBUTION OF RATES OF JUVENILE DELINQUENCY BY SUBJECTS OF THE RF (STATISTICAL DATA ON RATES FOR JANUARY 2017)	
The level of juvenile delinquency (number of crimes)	Regions of the RF
25-51	Saha Republic Amur Region Tyva Republic Tomsk Region Kurgan Region Udmurt Republic The Republic of Karelia Arhangelsk Region Komi Republic Bryansk Region Vladimir Region Voronezh Region Krasnodar Krai Nizhny Novgorod Region Saratov Region Samara Region Orenburg Region Moscow
51-77	Volgograd Region Rostov Region Republic of Tatarstan Stavropol Krai Khabarovsk Krai Primorsky Krai The Republic of Buryati Novosibirsk Region Republic of Bashkortostan Moscow Region
77-103	Krasnoyarsk Krai Transbaikals Krai Altai Krai Perm Krai
more than 103	Chelyabinsk Region Irkutsk Region Kemerovo Region Sverdlovsk Region

Thus, the first class is formed by regions with relatively low criminal activity (41.1% of all regions of Russia); the second class includes territories with low-to-average rates of criminal activity (20% of all regions of Russia); the third class consists of regions with medium-to-low rates of criminal activity (11.7% of all regions of Russia); the fourth class is formed by regions with medium-to-high criminal activity of minors (4.7% of all regions of Russia); the fifth class includes regions with high-to-average and high criminal activity of minors (4.7% of all regions of Russia). The first two classes form a relatively positive criminogenic zone of Russia. The last two ones are negative. The third class forms the middle (transitional) zone of the criminogenic space classification of Russia.

Crimes committed by minors recorded in 2016 are mostly sordid ones: Armed assaults, robberies, thefts, drug-related crimes. There are also more offenders appeared among students,

more crimes were committed in a state of alcoholic intoxication. The number of group crimes has significantly increased: Moving beyond law, teenagers get into gangs. Classification analysis allows us to establish several patterns of territorial distribution of juvenile delinquency. Compare regions disadvantaged in the sense of juvenile crime with territorial distribution of general criminality rates. Moreover, research in this area confirms the interrelationship of criminality of different age groups, especially the influence of older age groups onto juvenile delinquency.

Crime of minors is a reflection or a shadow of adult crime, since younger ones try to repeat behavioral stereotypes of older ones and the crime of seniors is replenished by the influx of yesterday's minors. The influence of adult crime onto juvenile delinquency is most often indirectly-through youth delinquency. Therefore, characterizing juvenile delinquency by its present state only is wrong. Juvenile delinquency is only the starting part of the general crime. It is the connection with the crime of other age groups that forms a particularly dangerous criminal face of juvenile delinquency.

From the data presented, it can be seen that in those constituent entities of the Russian Federation where a high level of general criminality is found in comparison with others, juvenile delinquency also has the highest rate. This category includes Chelyabinsk, Kemerovo and Sverdlovsk Regions.

Other trends can be detected when guided by rates for Moscow and Moscow region. Despite high rates of general crime, juvenile delinquency rates remain low which suggests that active prevention of crimes and offenses committed by adolescents is being carried out in these regions (Table 2).

Table 2 DISTRIBUTION OF LEVELS OF JUVENILE DELINQUENCY BY SUBJECTS OF RF(STATISTICAL DATA ON RATES FOR JANUARY 2017)		
Regions of the RF	The level of juvenile delinquency (number of crimes)	Total crime rate (number of crimes)
Saha Republic	25-51	less than 2143
Amur region		less than 2143
Tyva Republic		less than 2143
Tomsk Region		less than 2143
Kurgan region		less than 2143
Udmurt republic		less than 2143
The Republic of Karelia		less than 2143
Arhangelsk region		less than 2143
Komi Republic		less than 2143
Bryansk region		less than 2143
Vladimir region		less than 2143
Voronezh region		from 2143 to 4244
Nizhny Novgorod Region		from 2143 to 4244
Saratov Region		from 2143 to 4244
Samara Region		from 2143 to 4244
Krasnodar region		from 4244 to 6345
Orenburg Region		from 4244 to 6345
Moscow		more than 8446
Khabarovsk Krai	51-77	less than 2143
Primorsky Krai		less than 2143
The Republic of Buryati		less than 2143
Republic of Bashkortostan		less than 2143
Volgograd Region		from 2143 to 4244

Republic of Tatarstan		from 2143 to 4244
Novosibirsk Region		from 2143 to 4244
Stavropol Krai		from 2143 to 4244
Rostov Region		from 4244 to 6345
Moscow Region		from 6345 to 8446
Transbaikal Krai	77-103	less than 2143
Krasnoyarsk Krai		from 2143 to 4244
Altai Krai		from 2143 to 4244
Perm Krai		from 2143 to 4244
Irkutsk Region	more than 103	from 2143 to 4244
Chelyabinsk Region		from 4244 to 6345
Kemerovo Region		from 4244 to 6345
Sverdlovsk Region		from 4244 to 6345

As a rule, overall crime rates are higher when the economy is unsuccessful, unemployment is high, living standards are low, levels of alcoholism, drug addiction, are high. Let us compare rates of juvenile delinquency with the level of development of regions of the Russian Federation (Figure 2).

The analysis of living standard carried out by the "RIA rating" agency of the MIA "Russia Today" media group shows that many rates characterizing the quality of life in various regions have significant differences (MIA, 2017). For example, the unemployment rate in October-December 2016 varies from 1.6% in St. Petersburg to 28.8% in the Republic of Ingushetia. Money incomes of the population in November 2016 vary from 64.6 thousand roubles per person in the Nenets Autonomous District to 14.6 thousand roubles in the Republic of Tyva (MIA, 2017). Different purchasing power, different levels of access to medical care, education, sport, clean water, cultural values and other benefits of civilization, determined only by the fact of living in different regions contribute to growth of social stratification and growth of social tension.

Let's compare rating scores of the quality of life in regions with the level of juvenile delinquency (Table 3).

Based on the data presented, it can be noted that the opinion adopted in criminology that crime rates are lower in the developed regions than in subjects with a lower standard of living, was only partially confirmed. At the same time, it is still worth noting that in the part of regions with an increased level of crime, the standard of living does not exceed 50 points. This category includes Kemerovo, Irkutsk Regions, Transbaikal, Krasnoyarsk, Altai and Perm Krai.

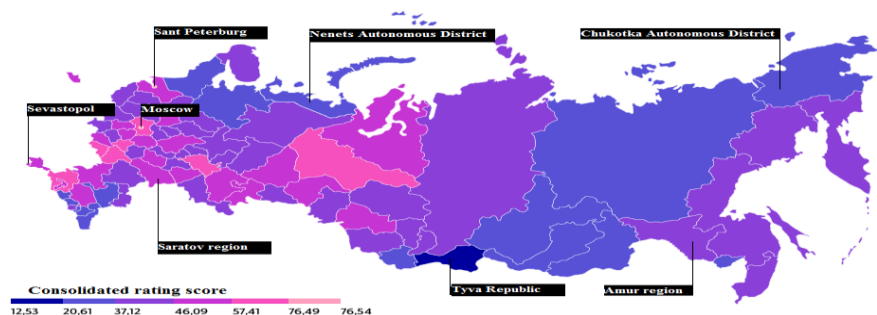


FIGURE 2
RATING OF SUBJECTS OF THE RUSSIAN FEDERATION ON THE QUALITY OF LIFE (2016)

Table 3 RATING SCORES OF THE QUALITY OF LIFE OF SUBJECTS OF THE RUSSIAN FEDERATION (STATISTICAL DATA ON RATES FOR JANUARY 2017)			
Regions of the RF	The level of juvenile delinquency (number of crimes)	Total crime rate (number of crimes)	Life quality in points (the maximum score is 100)
Saha Republic	25-51	less than 2143	33.99
Amur region		less than 2143	37.12
Tyva Republic		less than 2143	12.53
Tomsk Region		less than 2143	43.51
Kurgan region		less than 2143	28.08
Udmurt republic		less than 2143	44.42
The Republic of Karelia		less than 2143	34.47
Arhangelsk region		less than 2143	33.99
Komi Republic		less than 2143	39.73
Bryansk region		less than 2143	42.69
Vladimir region		less than 2143	45.84
Voronezh region		from 2143 to 4244	58.87
Nizhny Novgorod Region		from 2143 to 4244	53.71
Saratov Region		from 2143 to 4244	46.09
Samara Region		from 2143 to 4244	52.97
Krasnodar region		from 4244 to 6345	61.97
Orenburg Region		from 4244 to 6345	44.06
Moscow		more than 8446	76.54
Khabarovsk Krai	51-77	less than 2143	45.66
Primorsky Krai		less than 2143	42.26
The Republic of Buryati		less than 2143	30.88
Republic of Bashkortostan		less than 2143	48.82
Volgograd Region		from 2143 to 4244	44.8
Republic of Tatarstan		from 2143 to 4244	63.12
Novosibirsk Region		from 2143 to 4244	47.77
Stavropol Krai		from 2143 to 4244	49.85
Rostov Region		from 4244 to 6345	51.61
Moscow Region		from 6345 to 8446	68.55
Transbaikali Krai	77-103	less than 2143	25.95
Krasnoyarsk Krai		from 2143 to 4244	44.06
Altai Krai		from 2143 to 4244	25.23
Perm Krai		from 2143 to 4244	44.46
Irkutsk Region	more than 103	from 2143 to 4244	35.2
Chelyabinsk Region		from 4244 to 6345	50.68
Kemerovo Region		from 4244 to 6345	40.66
Sverdlovsk Region		from 4244 to 6345	54.47

Let's address the study of the unemployment rate by regions and federal districts in general (Shapoval, 2016) (Figure 3).

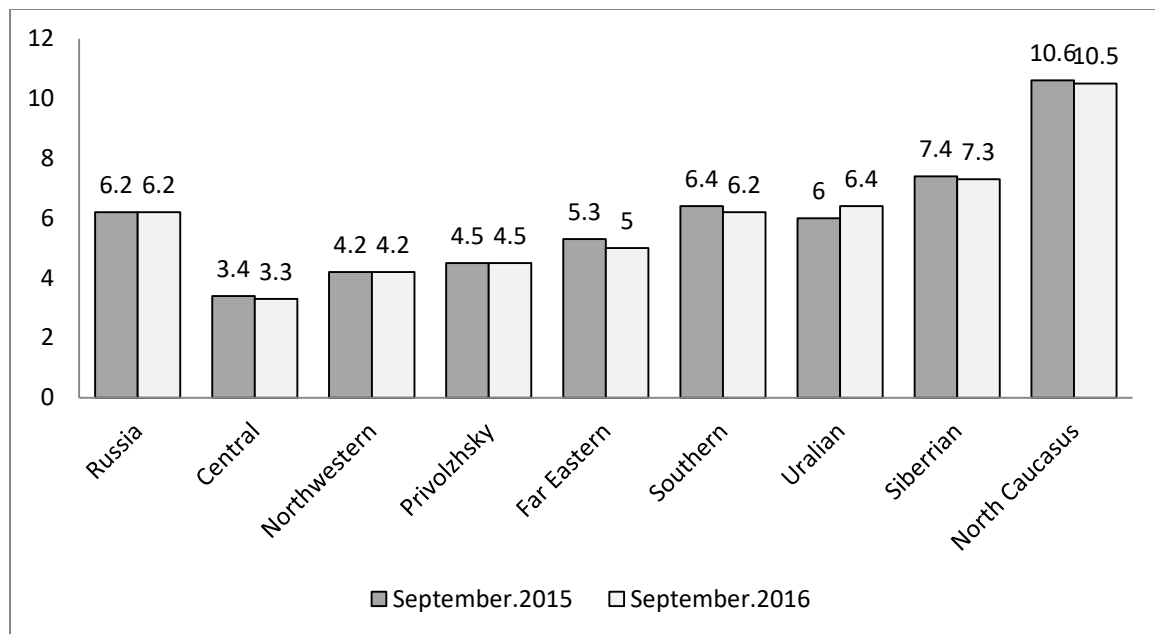


FIGURE 3
UNEMPLOYMENT RATE BY REGIONS AND FEDERAL DISTRICTS

Statisticians note that people who do not have a permanent source of income, become offenders. Experts believe that growth of crime and unemployment as well are interrelated and have their roots in the economic crisis (Portal, 2016). This is quite a natural process when the economic situation is deteriorating; unemployment and crime are growing in the country. People are trying to improve their financial situation at the expense of various methods, including criminal ones.

So, analysis of data on one of rates of life quality-unemployment, as well as its ratio to the crime rate-is also partially confirmed. However, in this case the connection becomes more stable. In regions with a high level of crime, including juvenile ones, there is an overstated unemployment rate: Irkutsk Region, Altai and Transbaikal Krai.

The issue of unemployment is sharply linked to the problem of having families in a socially dangerous situation. A family in a socially dangerous situation is a family in which parents or other legal representatives of minors do not fulfil their duties for upbringing, teaching, upholding and affect their behavior adversely or treating them cruelly. It should be noted that a family in a socially dangerous situation does not fulfil its functions in full. And first of all, children who live in these families suffer from this. Dissatisfaction of children's needs, lack of control by parents, creates favorable conditions for committing crimes by minors (On approving a new version of the Procedure for Interagency Cooperation on Prevention of Suicidal Attempts and Juvenile Suicides) (Table 4).

Table 4 THE LEVEL OF JUVENILE DELINQUENCY BY SUBJECTS OF THE RUSSIAN FEDERATION (STATISTICS ON RATES AS OF JANUARY 2017)				
Regions of the RF	The level of juvenile delinquency (number of crimes)	Total crime rate (number of crimes)	Life quality in points (the maximum score is 100)	% unemployment
Saha Republic	25-51	less than 2143	33.99	6.6
Amur region		less than 2143	37.12	5.9
Tyva Republic		less than 2143	12.53	14.8
Tomsk Region		less than 2143	43.51	7.8
Kurgan region		less than 2143	28.08	8.8
Udmurtia Region		less than 2143	44.42	5.0
The Republic of Karelia		less than 2143	34.47	8.6
Arhangelsk region		less than 2143	33.99	7.9
Komi Republic		less than 2143	39.73	9.2
Bryansk region		less than 2143	42.69	4.6
Vladimir region		less than 2143	45.84	5.4
Voronezh region		from 2143 to 4244	58.87	4.3
Nizhny Novgorod Region		from 2143 to 4244	53.71	4.2
Saratov Region		from 2143 to 4244	46.09	4.5
Samara Region		from 2143 to 4244	52.97	3.6
Krasnodar region		from 4244 to 6345	61.97	5.7
Orenburg Region		from 4244 to 6345	44.06	4.6
Moscow		more than 8446	76.54	1.7
Khabarovsk Krai	51-77	less than 2143	45.66	4.4
Primorsky Krai		less than 2143	42.26	5.6
The Republic of Buryati		less than 2143	30.88	9.0
Republic of Bashkortostan		less than 2143	48.82	5.7
Volgograd Region		from 2143 to 4244	44.8	6.5
Republic of Tatarstan		from 2143 to 4244	63.12	3.8
Novosibirsk Region		from 2143 to 4244	47.77	7.0
Stavropol Krai		from 2143 to 4244	49.85	5.0
Rostov Region		from 4244 to 6345	51.61	5.7
Moscow Region		from 6345 to 8446	68.55	3.0
Transbaikal Krai	77-103	less than 2143	25.95	10.8
Krasnoyarsk Krai		from 2143 to 4244	44.06	5.5
Altai Krai		from 2143 to 4244	25.23	8.6
Perm Krai		from 2143 to 4244	44.46	5.3
Irkutsk Region	more than 103	from 2143 to 4244	35.2	9.1
Chelyabinsk Region		from 4244 to 6345	50.68	6.9
Kemerovo Region		from 4244 to 6345	40.66	7.0
Sverdlovsk Region		from 4244 to 6345	54.47	5.8

In 2016, the level of juvenile delinquency in the Altai Krai increased significantly by 38%. However, there is another negative trend—the number of parents deprived of or restricted in their rights, has increased (Krai, 2016). "The increase of number of parents who are deprived of or restricted in parental rights indicates that bodies and institutions of the system for preventing child neglect and juvenile delinquency work with families in socially dangerous situations inadequately," said Adarov, the executive secretary of the Commission for Juvenile Affairs and Protection of their rights (News of the Altai Mountains, 2017). According to Tatyana Zvonareva,

senior assistant to the Chelyabinsk City prosecutor, main reasons why teenagers commit crimes are social unhappiness of families, idleness of free time, vagrancy. And it provokes not only crimes by adolescents, but also crimes against them (ChelDeti.RU.) (Table 5).

Table 5 THE LEVEL OF JUVENILE DELINQUENCY AND THE NUMBER OF FAMILIES IN SOCIALLY DANGEROUS SITUATIONS (STATISTICAL DATA ON RATES FOR JANUARY 2017)			
Regions of the RF	The level of juvenile delinquency (number of crimes)	Number of families in socially dangerous situations Data for the 2nd half of 2016	The number of underage residents in the territory of a constituent entity of the Russian Federation
Saha Republic	25-51	1934	260954
Amur region		1141	182115
Tyva Republic		997	124241
Tomsk Region		989	214354
Kurgan region		1648	179264
Udmurt Republic		1187	338349
The Republic of Karelia		259	123745
Arhangelsk region		866	236365
Komi Republic		2121	187098
Bryansk region		1034	226209
Vladimir region		1012	247786
Voronezh region		1722	390774
Nizhny Novgorod Region		2130	570933
Saratov Region		2403	451398
Samara Region		3659	583894
Krasnodar region		1484	1199767
Orenburg Region		2809	425319
Moscow		2916	1875649
Khabarovsk Krai	51-77	2023	262368
Primorsky Krai		1272	364082
The Republic of Buryati		505	239792
Republic of Bashkortostan		6127	894015
Volgograd Region		1012	247786
Republic of Tatarstan		1780	795959
Novosibirsk Region		1022	536870
Stavropol Krai		1688	570978
Rostov Region		1846	759519
Moscow Region		8320	1338677
Transbaikal Krai	77-103	1084	280156
Krasnoyarsk Krai		3735	629649
Altai Krai		4454	486197
Perm Krai		4343	557237
Irkutsk Region	more than 103	1211	558902
Chelyabinsk Region		1354	703615
Kemerovo Region		2526	556694
Sverdlovsk Region		3395	865239

Comparison of rates of total number of minors residing in the territory of the subject and the number of minors on the territory of the subject recognized as ones being in socially

dangerous situation make it possible to conclude that in regions where the crime rate is below the average level, the percentage of juveniles-registered in a socially dangerous situation is higher than in regions with a high crime rate for minors.

The highest quantitative indexes of minors recognized as being in socially dangerous situation are observed in regions that are safe in respect to juvenile crime (regions classified as group 1 in terms of juvenile delinquency (less than 25)) (Figure 4). For example, in the Kirov Region, the proportion of minors recognized as being in socially dangerous situation is 2.7% of the total number of minors, in the Tula Region this rate was 2.1%, in the Kurgan region—1.9%, in the Republic of Mordovia-2.3%.



FIGURE 4
THE SHARE OF MINORS LIVING IN FAMILIES, IN A SOCIALLY DANGEROUS SITUATION

In regions where there is a high level of juvenile delinquency, only in individual subjects of the Russian Federation (Altai and Perm Krai), the percentage of minors recognized as being in a socially dangerous situation exceeds 1%, in the remaining subjects of the Russian Federation (Sverdlovsk, Kemerovo, Chelyabinsk, Irkutsk Regions; Transbaikal, Krasnoyarsk Krai), the proportion of minors recognized as being in a socially dangerous situation does not exceed 1% (Figure 5).

It should be noted that it was in these regions of the Russian Federation that the lowest level of living standards was previously recorded. The problem of presence of families in a socially dangerous situation is related to the problem of abusing with alcohol and drugs sideways parents of minors. One of main reasons for family distress is alcoholism of parents. Let us consider data of the National Sobriety Rating in this regard (Centre for Information Communications "Rating", 2015) (Table 6).

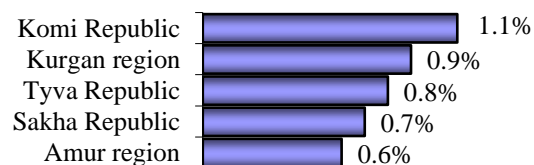


FIGURE 5
THE SHARE OF MINORS LIVING IN FAMILIES, IN A SOCIALLY DANGEROUS SITUATION

Table 6 LEVELS OF JUVENILE DELINQUENCY AND INDICATORS OF SOBRIETY RATING OF SUBJECTS OF THE RUSSIAN FEDERATION		
Regions of the RF	The level of juvenile delinquency (number of crimes)	Indicators of sobriety rated in points
Saha Republic	25-51	261.5
Amur region		236
Tyva Republic		284
Tomsk Region		118.5
Kurgan region		234
Udmurt Republic		220
The Republic of Karelia		256
Arhangelsk region		240.5
Komi Republic		275
Bryansk region		239
Vladimir region		227.5
Voronezh region		167
Nizhny Novgorod Region		163
Saratov Region		137.5
Samara Region		142
Krasnodar region		85.5
Orenburg Region		138
Khabarovsk Krai	51-77	261
Primorsky Krai		229.5
The Republic of Buryati		227
Republic of Bashkortostan		126.5
Volgograd Region		84
Republic of Tatarstan		113
Novosibirsk Region		141.5
Stavropol Krai		91
Rostov Region		69.5
Moscow Region		114
Transbaikal Krai	77-103	279.5
Krasnoyarsk Krai		157.5
Altai Krai		219.5
Perm Krai		250.5
Irkutsk Region	more than 103	211.5
Chelyabinsk Region		175.5
Kemerovo Region		155.5
Sverdlovsk Region		127

According to the data presented on the website, there are 3 groups of regions. So, the first group of the rating includes 20 most "sober regions", which scored less than 130 points, where alcoholism, alcohol and crime rates, as well as volumes of vodka and beer sales are the lowest in the country. In addition, according to experts, anti-alcohol legislation is effective in these regions. In the second group of the rating, regions which scored from 130 to 250 points are combined. Here the anti-alcohol campaign cannot be called successful and negative consequences of excessive alcohol consumption are expressed quite clearly, which already threatens health and safety of citizens.

The third rating group consists of the least prosperous subjects of the Russian Federation. These regions scored maximum points from 250 to 315.5, which demonstrate the high mortality,

morbidity and crime associated with consumption of alcoholic beverages as well as maximum level of alcohol sales.

As can be seen from the presented data, there is also a high rating of alcohol consumption in regions with high level of juvenile delinquency. Most regions with averaged crime rates are in rating group No. 1 and partly in No. 2.

Let us turn to statistical data on narcotization of the population represented by the Federal Press news agency. The top three leaders for seized heroin are Moscow City, Moscow and Voronezh Regions. In the top ten one can find Siberian regions (the Krasnoyarsk Krai, Novosibirsk and Omsk Regions), Urals (Perm Krai and Chelyabinsk Region) and Rostov Region. Hemp often comes across to policemen and their colleagues in Siberia and Far East: There are both plantations and lots of drugs from Asian countries. The first place has the Amur Region followed by Buryatia and the Krasnoyarsk Krai, the Altai Krai, the Irkutsk Region; even such scarcely populated subjects of the Russian Federation as the Republic of Tuva and the Jewish Autonomous Region were in the top ten. In addition to eastern regions, the top 10 for cannabis has been comprised by Stavropol Krai and Moscow Region again.

Less obvious are results on chemical drugs—the championship is held by Nizhny Novgorod Region, Tula Region and St. Petersburg. Top lines of the final table were occupied by the Moscow region which scored points in all three graphs and Krasnoyarsk Krai with Nizhny Novgorod Region due to falling into the top by separate groups of drugs. The next on the Amur Region, Buryatia and Primorye also have scanty points for heroin and psychotropic substances, but high rates for marijuana brought them to the top of the rating (Ilgova, 2017). If you focus on presented data, in the above-mentioned regions you can see again regions with an increased level of crime as well as the largest number of registered families in a socially dangerous situation.

According to the Federal Press news agency, there are more than 65,000 criminals registered in Russia related to drug trafficking—sellers, manufacturers, couriers over the past five years. In Moscow alone there are 4709 people, this is more than in Far Eastern or North Caucasian federal districts. Afterward follow St. Petersburg (3404 people) and Moscow Region (3885). Krasnodar, Krasnoyarsk and Primorye Krai, Sverdlovsk, Chelyabinsk, Rostov, Samara and Novosibirsk Regions also fell into the top ten. Statistics on juvenile offenders is also available—the leader here is Sverdlovsk Region in which an investigation was conducted regarding 126 young drug traffickers (approximately one minor for 18 adults) over five years, followed by Krasnoyarsk Krai and St. Petersburg. The one pulls no punches with children in Nizhny Novgorod and Arkhangelsk regions—they are in the top 10 in terms of number of young criminals, while their total share is quite high: Every eighth one accused in drug offenses turns out to be a juvenile (Ilgova, 2017).

The problem of having families in a socially dangerous situation is to a certain extent related to the problem of child's suicide. As a rule, frequency of suicides among children and adolescents (as well as within the population as a whole) is higher there where the economy is unsuccessful, unemployment level is high, living standards are low, levels of drunkenness, alcoholism and drug addiction and crime are high. Traditionally, one of main reasons for committing suicide is pathological education; this happens when there is no love in the parents' family and indifference, cruelty and violence come to replace it.

An analysis of motives for committing suicides and factors causing suicide by children and adolescents showed that most often juveniles committed suicides due to family conflicts; romantic relationships; presence of personal problems, isolation and mental illness. The problem of teenage suicide has significantly increased recently due to spread of influence of so-called

"death groups", which contribute to committing suicide and suicide attempts by minors as a result of dissemination of provocative information in open information sources including the Internet. Among reasons for suicide are also factors such as: Conflicts with peers and friends; failures in studying, low level of school adaptation; indifference of others, callousness; demonstrative behavior with suicidal intentions resulting in death (demonstrative suicide); tactless behavior of individual teachers (psychological violence), conflicts with teachers, fear of the unified state exam and the low level of passing the USE.

CONCLUSION

Thus, the hypothesis of determinism of growth of juvenile delinquency in subjects of the Russian Federation by their low socioeconomic indicators was partially confirmed. In further research, indicators of socioeconomic development of the subjects of the Russian Federation, including economic indicators of average wages and the level of unemployment, as well as social indicators related to the broader concept of "quality of life", need to be clarified. The latter should be supplemented by indicators of accessibility of educational and recreational services as well as statistical data on the passage of minors' final attestations in educational institutions of various profiles.

The data obtained in the present study can be used in organization of training sessions and independent work of students in criminology as well as related social disciplines. From a practical point of view, the results of the study can be applied to improve operations of commissions on affairs of minors and protection of their rights in the following areas: Identification and elimination of causes and conditions that contribute to homelessness, offenses and antisocial actions of minors; social and pedagogical rehabilitation of minors who are in a socially dangerous situation.

REFERENCES

- Ceccato, V. & Haining, R. (2004). Crime in border regions: The Scandinavian case of Öresund. *Annals of the Association of American Geographers*, 94(4), 807-826.
- Ilgova, E.V., Gorbachev, M.V., Kuznetsova, I.O., Fedorov, V.K., Krasnoshchekov, A.A. & Latypova, Y.A. (2017). *Indicators of activity of commissions on affairs of minors and protection of their rights: Analytical inquiry*. Saratov, Yu.V. Koval PH.
- Kolokol'tsev, V.A. (2016). An expanded meeting of the collegium of the ministry of internal affairs of the Russian Federation. *The official website of the MIA*.
- Krai, P. (2016). *On approving a new version of the procedure for interagency cooperation on prevention of suicidal-attempts and juvenile suicides: Decree of the commission on affairs of minors and protection of their rights*.
- Ministry of Internal Affairs (MIA). (2017). Rating of Russian regions on life quality. *"Russia Today"*.
- Portal. (2016). The Rosstat has united unemployed ones and criminals.
- Shapoval, E.M.S.A.S. (2016). Analysis of the unemployment rate by regions of Russia for 2015-2016. Materials III International scientific-practical Conference: Scientific and educational space: Development prospects. *Cheboksary*, 174-176.