

# THE IMPACT OF SCENARIO GENERATION ON THE ECONOMIC FACTORS AND THE ASSET RETURNS – APPLIED ON THE SOCIAL PENSION FUND IN EGYPT

Shahinaz Magdy, Cairo University  
Prof. Mohamed Gouda, Cairo University

## ABSTRACT

*This paper addresses how the simulation of future scenarios can contribute to the performance of fundamental economic factors in Egypt and the asset returns of the social pension fund; this is through introducing the economic scenario generator (ESG). The paper has used the vector autoregressive (VAR) model to construct an intertemporal dependency among the key economic factors; using historical dataset from 2004/2005Q1 to 2021/2022Q4. After generating the stochastic scenarios of the economic factors, the asset return scenarios for each class can be created based on their relations with these factors. These relationships are described using linear models.*

**Keywords:** Economic Scenario Generator (ESG), Vector Autoregressive (VAR), Fundamental Economic Factors, Asset Return.

## INTRODUCTION

The ability of the pension funds to meet their current or future liabilities depends on the accuracy of estimating the accrued benefits, and thus taking into account all the factors affecting the determination of their future value. Economic factors are considered one of the most important factors affecting the efficiency and effectiveness of the pension funds, and thus affect the ability of those systems to be financially sustainable in the long term.

Projecting the assets and liabilities of the pension funds requires simulation of future economic scenarios. Typically, the economic scenario generator (ESG) produces economic scenarios that manage the economy's evolution, investment returns, inflation rates, and the other factors in a consistent manner. In general, ESG is necessary for producing scenarios, under which changing funding requirements are estimated, especially when there are many factors interacting on both sides of the assets and liabilities (Campbell et al., 2016).

There are a wide range of ESGs that are currently used. Among the few published models for ESG are the Wilkie Models (Wilkie, 1986; Wilkie, 1995; Wilkie, 2011; Mulvey, 1996; Mulvey & Thorlacius, 1998). Under these models, the variables were related to each other in a cascade structure, which means that each subsequent variable in the cascade structure depends only on prior values of the variable and the values of variables that lie above them on the cascade structure.

This paper does not make use of these models. It's needed to reflect the interrelationships between the factors. In this respect, the research has used the vector autoregressive (VAR) model as an alternative approach (it was also recommended in Wilkie & Sahin (2019)). It is one of the stochastic methods that are usually used to predict the interrelated factors and analyze the dynamic mutual influence of these factors. It also avoids the need to develop structural models by treating each of the variables as variables inside the system and dependent on other variables.

This model doesn't have a restrictive cascade structure, allowing each factor to be influenced by any other. It allows the data to recognize a structure between variables, in order to model the economic variables and to fit parameters to the structure (Yakoubov et al., 1999).

### ESG for Fundamental Economic Factors

The fundamental factors that are addressed in this paper are the GDP growth rate, short term interest rate, inflation rate, rate of unemployment, growth rate of domestic investment, growth rate of consumption, and salary growth rate. These factors were selected because they can reflect the period-to-period variations in the economy's status and have an indirect impact on the asset returns in a consistent manner. The following table shows the indicator for each factor Table 1.

Table 1 THE INDICATOR FOR EACH FACTOR		
Fundamental Economic Factors	Indicator	Notation
GDP growth rate	quarterly notional GDP growth rate	gdp
Short term interest rate	3-month treasury bill rate	3mtb
Inflation rate	consumer price index	cpi
Unemployment rate	$\frac{unemployed}{work\ force} \times 100$	unemploy
Domestic investment growth rate	gross domestic investment	dingr
Consumption growth rate	personal consumption expenditures	pconsump
Salary growth rate	rate of salaries increase in Egypt	sgr

Source: Author

These intertemporal interactions among these factors are modeled using a vector autoregressive (VAR) in which relationships among leading, coincident, and lagging factors can be demonstrated by incorporating lagging variables (For instance, the central bank determines the short-term interest rate after examining the current economic growth, unemployment, and other relevant conditions). Moreover, the VAR(1) model is used to account for the impact of the preceding quarter's values on the evolution of fundamental factors.

### Data and Analysis

The generation of scenarios is estimated using quarterly historical dataset of the Egyptian economic factors from 2004/2005Q1 to 2021/2022Q4 (it covers three full economic cycles). This data was collected from the annual reports of the Central Bank of Egypt and the Central Agency for Public Mobilization and Statistics.

Instead of creating risk-neutral scenarios, the ESG creates real-world scenarios; in order to simulate the future in a realistic manner by generating plausible outcomes based on past observed experience. The status of economic recession or growth is determined by the underlying economic factors jointly. This dependency can be constructed as (Einarsson, 2007):

$$X_t = c + A_1 X_{t-1} + \varepsilon_t$$

Where,

$X_t \Rightarrow$  a column vector with the economic factors during period  $t$

$c \Rightarrow$  a column vector for the intercepts.

$A_1 \Rightarrow$  a square matrix of the parameters that describe the linear dependence of economic factors

$\varepsilon_t \Rightarrow$  a column vector with the terms of error which are assumed to be normally distributed,

Where  $\varepsilon_t \sim (0, \sigma^2)$

The model parameters that were fitted based on historical data are shown in the Table 2 below; along with the standard deviation of the error vector  $\varepsilon_t$ .

Table 2 PARAMTERS OF VAR(1) MODEL									
	unemploy	cpi	dingr	gdp	3mtb	pconsump	sgr	c	sigma
unemploy	0.92122	0.021727	0.005181	-0.01809	-0.11439	-0.043058	-0.014645	0.020911	0.006941
cpi	0.076223	0.911031	0.002121	0.093166	-0.16583	-0.019429	-0.072272	0.024668	0.03101
dingr	2.6179	0.4567	0.3313	1.6099	1.0795	1.9134	-0.4653	-0.4359	0.222
gdp	-0.17547	-0.05785	0.03947	0.38022	0.06844	0.03549	0.02987	0.03385	0.01825
3mtb	0.024488	0.128401	-0.00154	0.013741	0.682328	-0.152157	-0.030791	0.02686	0.01033
pconsump	-0.11922	0.05102	-0.01391	0.03798	-0.30219	0.32889	-0.00618	0.06968	0.02079
sgr	-0.27763	0.08202	0.02651	-0.22045	-0.17773	0.08141	0.73697	0.07478	0.03454

Source: Author

Moreover, the stable values of the economic factors  $\bar{X}$  can be derived based on the fitted VAR(1) as follows:

$$\bar{X} = c + A_1 \bar{X}$$

TABLE 3  
THE STABLE VALUES

Fundamental Factors	Stable value (%)	Historical Data	
		Mean (%)	Standard deviation (%)
Real GDP Growth Rate	0.045	0.046	0.024
Consumption Growth Rate	0.050	0.046	0.025
Inflation Rate	0.103	0.110	0.060
Unemployment Rate	0.096	0.104	0.021
Salary Growth Rate	0.138	0.129	0.050
Short Term Interest Rate	0.098	0.103	0.030
Domestic Investment Growth Rate	0.105	0.162	0.249

Source: Author

Based on VAR(1), the growth rate of future economic, inflation rate, interest rates, and unemployment rate is expected to be a little bit lower than in the past 17 years. The domestic investment growth rate is expected to be lower in a high percentage than its historical mean Table 3. It is anticipated that consumption will be slightly higher, and the salary growth rate is expected to rise. These implicit expectations serve as useful checkpoints for determining if the model is reasonable in light of the model user's predictions for future economic growth.

The error terms of the economic factors which represent the non-systemic component in the model are not independent of each other. Then, it is important to capture the correlation when developing future scenarios Table 4.

**Table 4**  
**VAR(1) CORRELATION MATRIX OF ERROR TERMS  $\varepsilon_t$**

	<b>unemploy</b>	<b>cpi</b>	<b>dingr</b>	<b>gdp</b>	<b>3mtb</b>	<b>pconsump</b>	<b>sgr</b>
<b>unemploy</b>	1	-0.028267	-0.23286	-0.58599	-0.20143	0.04623	0.013439
<b>cpi</b>	-0.02827	1	0.11803	-0.01531	0.15532	-0.2248	-0.003476
<b>dingr</b>	-0.23286	0.118034	1	0.51499	0.0647	-0.27997	-0.059759
<b>gdp</b>	-0.58599	-0.015305	0.51499	1	0.06349	-0.12179	-0.01136
<b>3mtb</b>	-0.20143	0.155325	0.0647	0.06349	1	-0.01785	0.03405
<b>pconsump</b>	0.04623	-0.2248	-0.27997	-0.12179	-0.01785	1	0.01778
<b>sgr</b>	0.01344	-0.003476	-0.05976	-0.01136	0.03405	0.01778	1

Source: Author

In this respect, the economic factors' stochastic scenarios can be determined as (Shang, 2021):

Where,

$$X_t = c + A_1 X_{t-1} + L \varepsilon_t, \sigma$$

$\sigma \Rightarrow$  a column vector of the standard deviation of the error terms

$\varepsilon_t \Rightarrow$  a column vector with independent random variables, all of which have a mean of zero.

$L \Rightarrow$  a lower triangular matrix, allowing the correlation matrix of error term to be decomposed as  $L \times L^T$ .

Under each scenario, the economic situation is assessed for each quarter to determine whether it's in growth or in recession for accurately analyzing the scenarios, and for generating the returns of assets as well. To predict if the economy is in recession, the following logistic model is used:

Where,

$$P_t = \frac{1}{1 + e^{-\beta X_t}}$$

$P_t \Rightarrow$  the likelihood that the economy will be in recession during period  $t$

$\beta \Rightarrow$  a row vector providing the model parameters for variables

$X_t \Rightarrow$  a column vector with the constant term and the economic variables for periods  $t$ , and  $t-1$

### ESG for Asset Return

The asset return is a combination of two components: a systemic factor and an idiosyncratic factor. Based on the historical data, the systemic factor is determined by the relationship between asset return and the overall economy, which is driven by key economic factors. As for the idiosyncratic factor, it is determined by each asset class's characteristics (Shang, 2021). The paper has used the assets portfolio of the government social pension fund in Egypt. The fund's historical dataset of asset returns was obtained through the government fund's annual reports, and the fund's cash flows from 1997 to 2021. The amounts of the government pension fund are invested in the National Investment Bank (NIB), treasury bonds (TB), securities & government bonds (Sec & GB), and deposits (Dep). According to Shang & Hossain (2019), Asset return stochastic scenarios can be constructed as:

Where,

$$y_t = a + \varphi_1 y_{t-1} + \beta_0 X_t + \beta_1 X_{t-1} + \sigma \varepsilon_t$$

$y_t \Rightarrow$  a column vector for all asset classes' returns during period  $t$

$a \Rightarrow$  a column vector for the intercepts

$\varphi \Rightarrow$  a column vector for the parameters to manage the relationship between current return and return for all asset classes during period  $t$

$\beta \Rightarrow$  a matrix that comprises model parameters of all asset classes for the fundamental factors

$X_t \Rightarrow$  a column vector with the economic factors at time  $t$

$\sigma \varepsilon_t \Rightarrow$  the idiosyncratic part of asset return

Table 5 THE RELATIONSHIP BETWEEN ASSET RETURNS AND THE ECONOMIC FACTORS														
Lag (Years)	Economic Factors													
	1	0	1	0	1	0	1	0	1	0	1	0	1	0
Asset Class	Unemploy		cpi		gdiv		gdp		3mtb		pconsump		sgr	
NIB	-0.03	0.01	-0.03	-0.04	-0.01	0	0.04	0.08	-0.04	-0.04	0.15	-0.07	-0.05	-0.04
TB	0.22	-0.14	0.03	0.01	0.04	-0.02	0.08	-0.28	-0.01	0.05	-0.06	-0.32	0.03	-0.04
Sec.&GB	1.17	-0.90	-0.36	-0.49	0.21	0.12	2.30	0.04	-0.28	-0.79	-1.30	0.92	0.34	-0.16
Dep.	1.74	-1.09	0.29	-0.03	-0.12	-0.06	0.04	-0.24	0.10	-0.08	0.55	0.45	-0.15	-0.22

Source: Author

Using the above Table 5, we can determine the equations for each asset return; in order to predict the returns for each class accurately.

#### For the NIB investment return

$$\begin{aligned} NIB_t = & 0.04 + 0.72 NIB_{t-1} + 0.01 * Unemploy_t - 0.03 * Unemploy_{t-1} - 0.04 * cpi_t - 0.03 * cpi_{t-1} \\ & - 0.01 * gdiv_{t-1} + 0.08 * gdp_t + 0.04 * gdp_{t-1} - 0.04 * (3mtb) - 0.04 * (3mtb)_{-1} \\ & - 0.07 * (pconsump) + 0.15 * (pconsump)_{-1} - 0.04 * (sgr)_t - 0.05 * (sgr)_{t-1} \\ & + 0.006 \end{aligned}$$

The adjusted  $R^2$  for this model reached to around 69.2%, which means that the model is able to explain 69% only from the change in the NIB return

#### For the TB return

$$\begin{aligned} TB_t = & 0.01 - 0.74 TB_{t-1} - 0.14 * Unemploy_t + 0.22 * Unemploy_{t-1} + 0.01 * cpi_t + 0.03 * cpi_{t-1} \\ & - 0.02 * gdiv_t + 0.04 * gdiv_{t-1} - 0.28 * gdp_t + 0.08 * gdp_{t-1} + 0.05 * (3mtb) \\ & - 0.01 * (3mtb)_{-1} - 0.32 * (pconsump)_t - 0.06 * (pconsump)_{t-1} - 0.04 * (sgr)_t \\ & + 0.03 * (sgr)_{-1} + 0.004 \end{aligned}$$

The adjusted  $R^2$  for this model reached to around 86.8%, which means that the model is strongly able to explain 87% from the change in the TB return

#### For the Sec.& GB return

$$\begin{aligned} Sec_t = & 0.06 - 0.01 Sec_{t-1} - 0.90 * Unemploy_t + 1.16 * Unemploy_{t-1} - 0.49 * cpi_t - 0.36 * cpi_{t-1} \\ & + 0.12 * gdiv_t + 0.21 * gdiv_{t-1} + 0.04 * gdp_t + 2.30 * gdp_{t-1} - 0.79 * (3mtb) \\ & - 0.28 * (3mtb)_{-1} + 0.92 * (pconsump)_t - 1.30 * (pconsump)_{t-1} - 0.16 * (sgr)_t \\ & + 0.34 * (sgr)_{-1} + 0.038 \end{aligned}$$

The adjusted  $R^2$  for this model reached to around 47.4%, which means that the

model is able to explain only 47% from the change in the Sec.& GB return

### For the Dep. return

$$\begin{aligned} Dep_t = & 0.05 + 0.05 Dep_{t-1} - 1.09 * Unemploy_t + 1.74 * Unemploy_{t-1} - 0.03 * cpi_t + 0.29 * cpi_{t-1} \\ & - 0.06 * gdiv_t - 0.12 * gdiv_{t-1} - 0.24 * gdp_t + 0.04 * gdp_{t-1} - 0.08 * (3mtb) \\ & + 0.10 * (3mtb)_{-1} + 0.45 * (pconsump)_t + 0.55 * (pconsump)_{t-1} - 0.22 * (sgr)_t \\ & - 0.15 * (sgr)_{-1} + 0.018 \end{aligned}$$

The model have a lowest adjusted  $R^2$ , where it reached to 23.3%, which means that the model is able to explain 23% only from the change in the Deposits return. Figures 1 to 4 show the statistics of 200 generated stochastic scenarios of returns of asset classes, including the expected value, minimum, maximum, and 10th, 25th, 75th, and 90th percentiles.

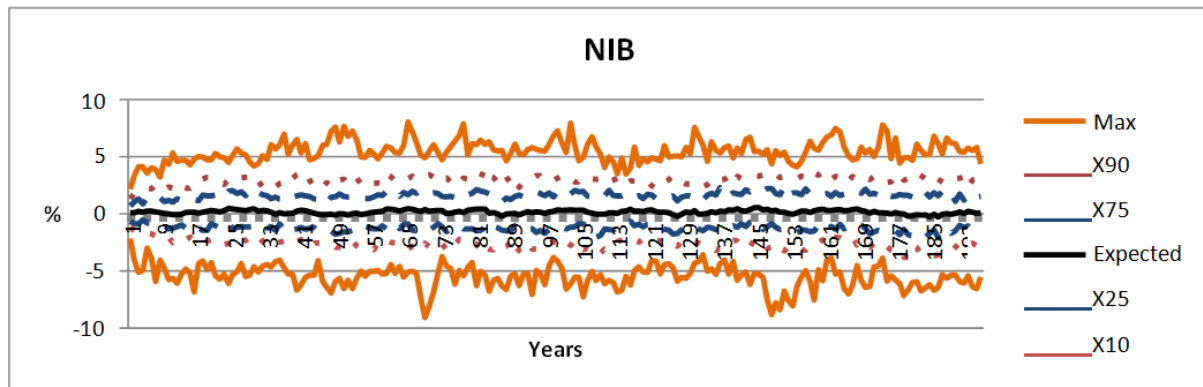


Figure 1  
THE STOCHASTIC SCENARIOS OF NIB RETURNS

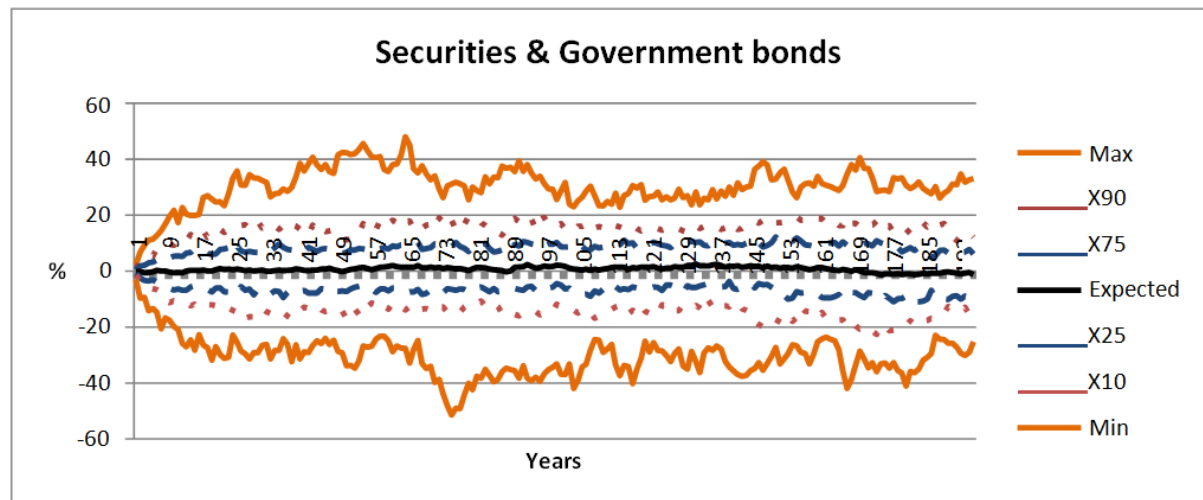


Figure 2  
THE STOCHASTIC SCENARIOS OF SEC.&GB RETURNS

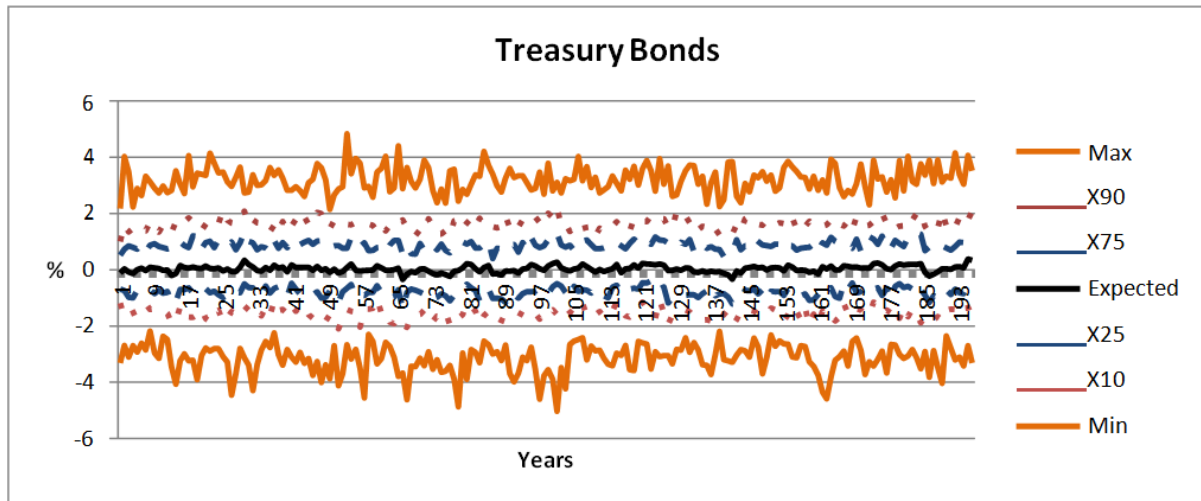


Figure 3  
THE STOCHASTIC SCENARIOS OF TB RETURNS

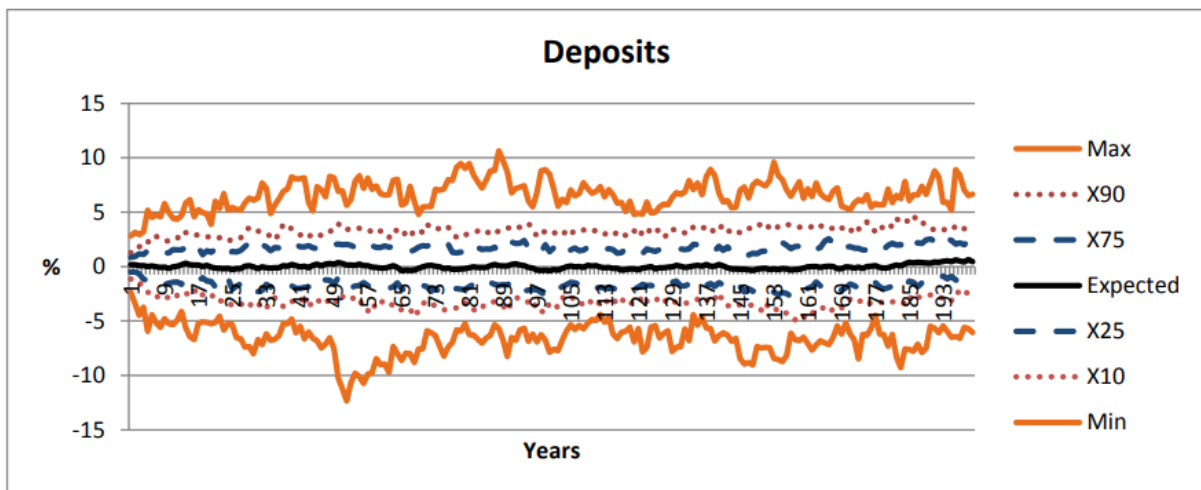


Figure 4  
THE STOCHASTIC SCENARIOS OF DEPOSITS RETURNS

## CONCLUSIONS AND RECOMMENDATIONS

Asset returns and economic factors don't necessarily correlate linearly. Higher correlation and volatility are frequently observed during economic downturns. Economic asset return scenarios must be further modified to account for the nonlinear relationship. The average growth rate of GDP is 1.5% under the worst scenario and 2.7% under the good scenario. On average, unemployment rates are higher under the bad scenario. Accordingly, interest rates are lower to stimulate the economy.

The yields on treasury bonds, NIB investment, and deposits decrease during economic downturns. Securities & government bonds perform similarly but with varying volatility during recessions. Based on adjusted  $R^2$  value, the returns of the securities & government bonds and deposits are more influenced by idiosyncratic factors than by economic factor. The bad scenario is not necessarily worse than the good scenario. The main difference between the two scenarios is that under the bad scenario, the economy is moving considerably more slowly than under the good scenario.

Although the factors that are used in this paper are the most common economic factors, other factors can be involved, based on purpose of a model and the features of the economy. It is important to assess each scenario's reasonableness regarding whether basic economic patterns are followed.

## REFERENCES

- Campbell, M.P., Christiansen, S., Cox, S.H., Finn, D., Griffin, K., Hooker, N., ... & Pedersen, H. (2016). *Economic scenario generators: A practical guide*, Society of Actuaries.
- Einarsson, A. (2007). *Stochastic Scenario Generation for the Term Structure of Interest Rates* (Doctoral dissertation, Master Thesis, Informatics and Mathematical Modelling, Technical University of Denmark, (DTU).
- Mulvey, J.M. (1996). Generating scenarios for the Towers Perrin investment system. *Interfaces*, 26(2), 1-15.
- Mulvey, J.M., & Thorlacius, A.E. (1998). The Towers Perrin global capital market scenario generation system. *Worldwide Asset and Liability Modeling*, 10, 286.
- Shang, K., & Hossen, Z. (2019). *Liability-driven investment – Benchmark Model*, Society of Actuaries.
- Shang, K., (2021). *Deep Learning for Liability-Driven Investment*, Society of Actuaries.
- Wilkie, A.D. (1984). A stochastic investment model for actuarial use. *Transactions of the Faculty of Actuaries*, 39, 341-403.
- Wilkie, A.D. (1995). More on a Stochastic Asset Model for Actuarial Use. *British Actuarial Journal*, 1(5), 777–964.
- Wilkie, A.D., & Şahin, Ş. (2019). Yet more on a stochastic economic model: Part 5: a vector autoregressive (var) model for retail prices and wages. *Annals of Actuarial Science*, 13(1), 92-108.
- Yakoubov, Y., Teeger, M., & Duval, D.B. (1999). *A stochastic investment model for asset and liability management*. In Proceedings of the 9th International AFIR Colloquium, 237-66.

**Received:** 11-Jun-2023 Manuscript No. AAFSJ-23-13686; **Editor assigned:** 13-Jun-2023, PreQC No. AAFSJ-23-13686(PQ); **Reviewed:** 27-Jun-2023, QC No. AAFSJ-23-13686; **Revised:** 14-Jul-2023, Manuscript No. AAFSJ-23-13686(R); **Published:** 21-Jul-2023